

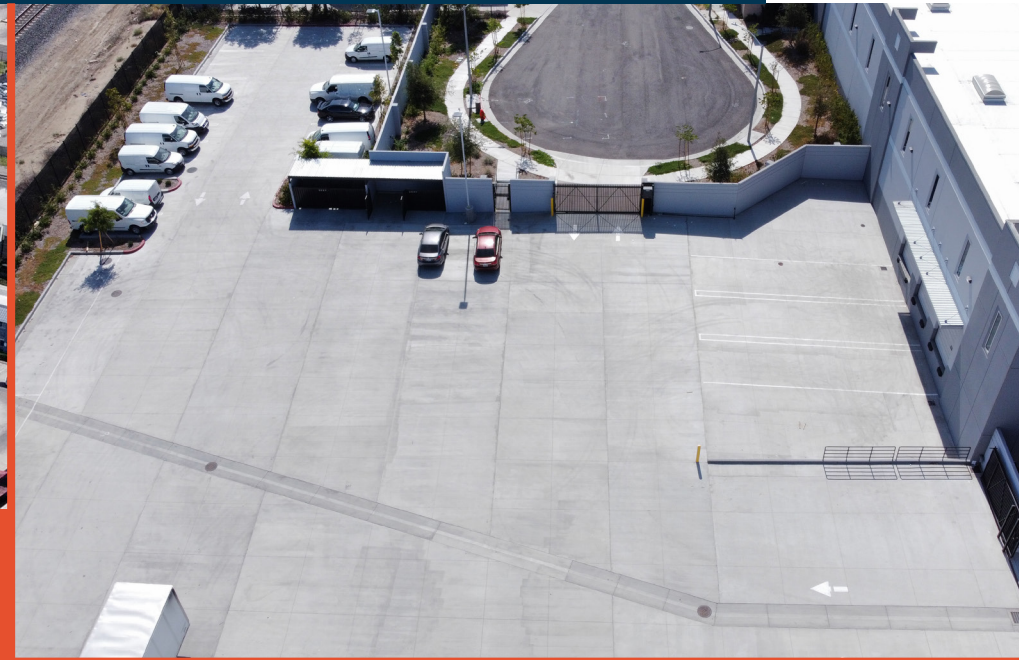


±35,033 SF BUILDING ON 1.65 ACRES

1154 East Holt Boulevard, Ontario, CA 91761

Building

1154 East Holt Blvd



Property Highlights

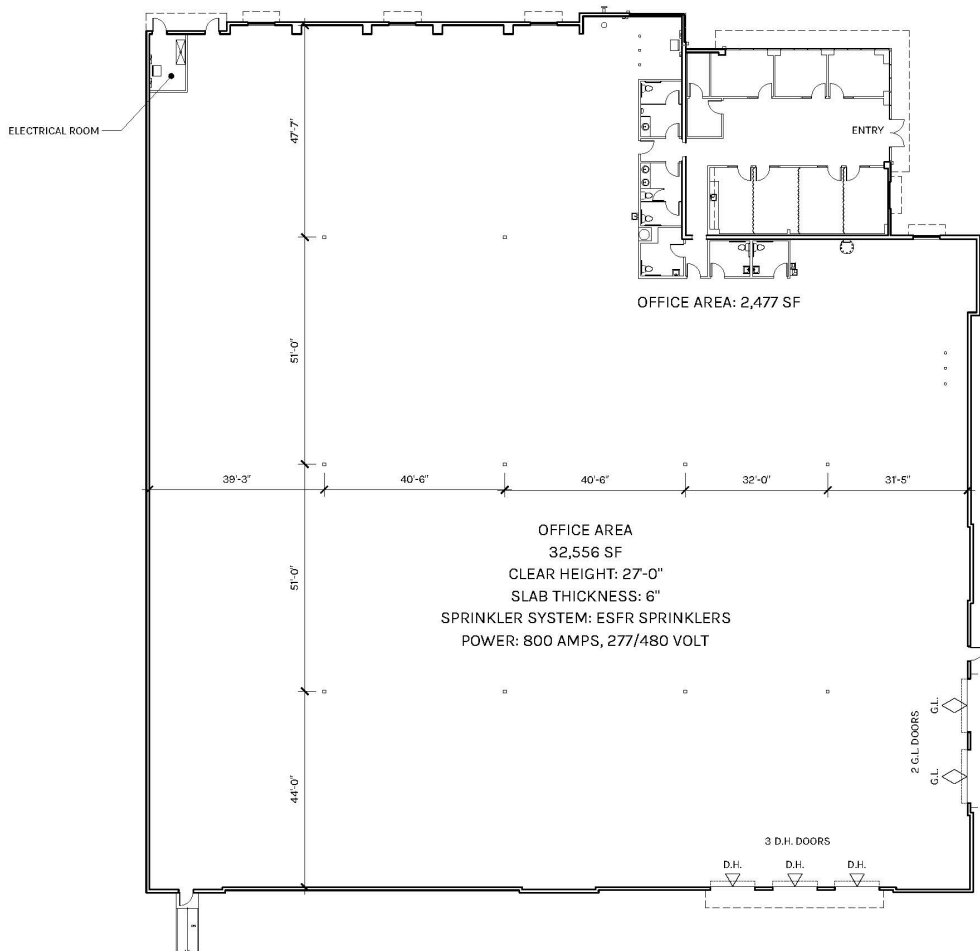
- ±35,033 SF Building
- ±2,477 SF of Office
- 27' Clear Height
- Three (3) Dock High Doors
- Two (2) Ground Level Doors
- 800 Amps, 480/277 Volts
- ESFR Sprinklers
- Less than a mile from Ontario International Airport
- Concrete Yard Area
- APN: 1049-141-31-0000



Floor Plan

1154 East Holt Blvd

Overall Floor Plan ±32,556

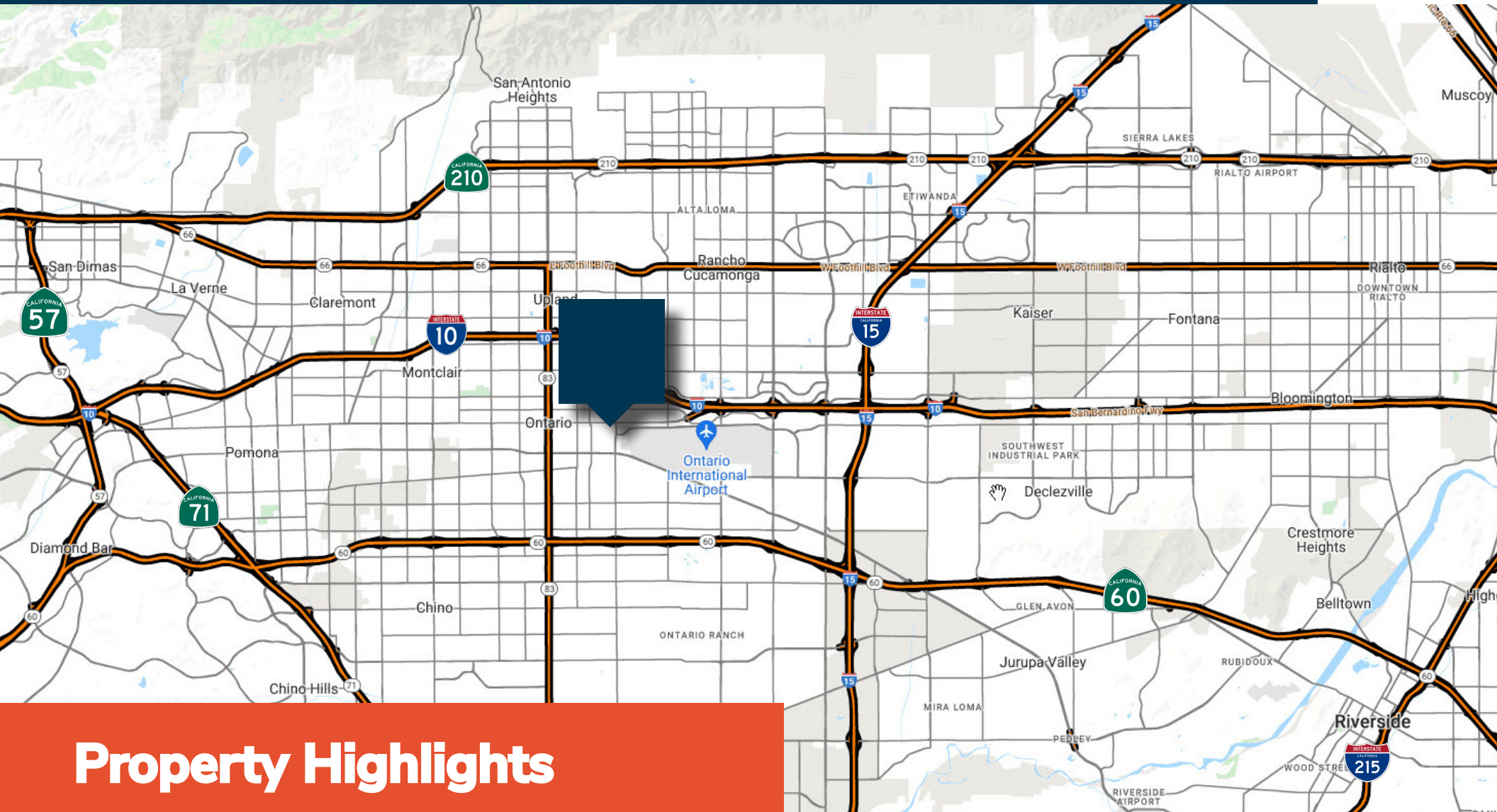


Office Floor Plan ±2,477 SF



Location

1154 East Holt Blvd



Property Highlights

- Immediate access to 10, 60 and 15 Freeways
- Less than (1) mile to Ontario International Airport