

5236 FARADAY COURT
CHINO | CA



FOR LEASE
± 27,075 SF
INDUSTRIAL BUILDING

FOR LEASE ±27,075 SF

INDUSTRIAL BUILDING

5236 FARADAY COURT

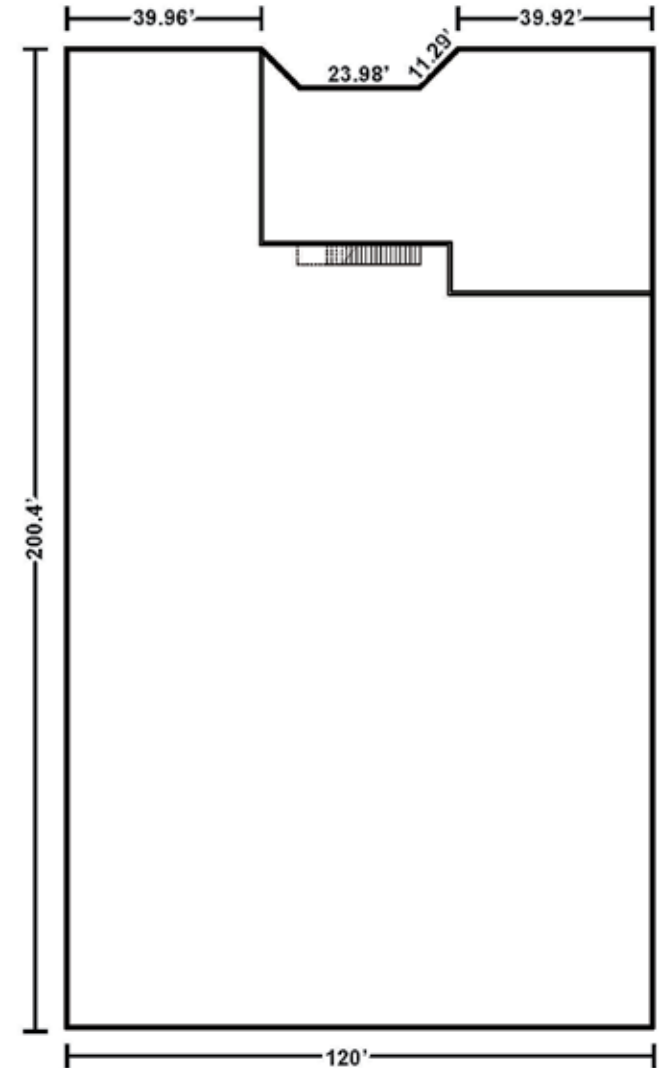
CHINO | CA

PROPERTY FEATURES

- ±27,075 SF Industrial Building
- ±6,730 SF of Two-Story Office Space
- Three (3) Ground Level Doors (12'x14')
- 17'8" Clearance Height
- Fire Sprinklered
- Large, Paved & Secured Yard Area
- 600 Amps, 277/480 Volts (verify)
- Concrete Tilt Up Construction
- Monument Signage Available
- End of the Cul-de-Sac Building
- Excellent Chino Location



FLOOR PLAN





FOR LEASE ±27,075 SF
INDUSTRIAL BUILDING
5236 FARADAY COURT

FOR LEASE ±27,075 SF
INDUSTRIAL BUILDING



5236 FARADAY COURT
CHINO | CA





BESTOCEAN WORLDWIDE LOGISTICS

TACTOCAL LOGISTICS SOLUTIONS

BEST INC

GO TO LOGISTICS

NO. 1 LOGISTICS INC

TACTICAL LOGISTICS

PACE GLOBAL LOGISTICS LLC.

SUNSET PACIFIC TRANSPORTATION

PRO WAREHOUSE LOGISTICS CORP.

TRANSMARINE LOGISTICS INC.

RICHPORT LOGISTICS

MAXLINK LOGISTICS

SEKO LOGISTICS

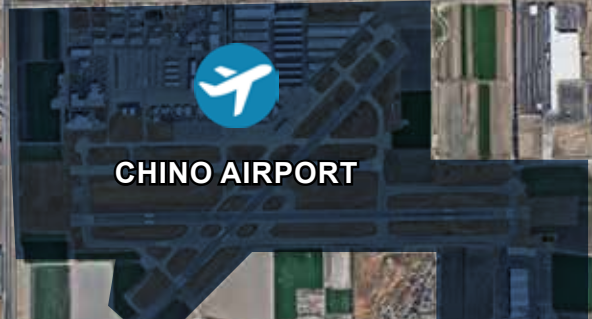
MOTIVATIONAL FULFILLMENT & LOGISTICS SERVICES MOUNTAIN DC

MOTIVATIONAL FULFILLMENT & LOGISTICS SERVICES EUCLID DC

MOTIVATIONAL FULFILLMENT & LOGISTICS SERVICES BICKMORE DC



SUBJECT PROPERTY



CHINO AIRPORT

FOR LEASE ±27,075 SF
INDUSTRIAL BUILDING
5236 FARADAY COURT

