

# AVAILABLE FOR LEASE

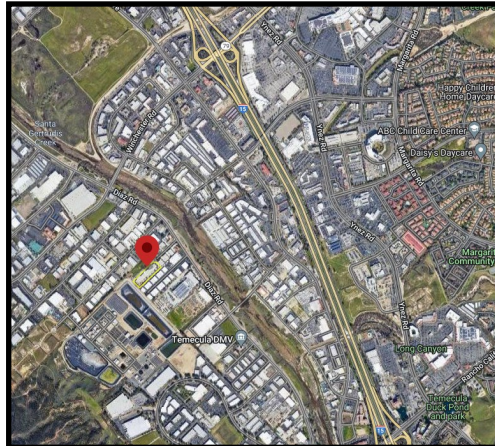
1344-19,200 SQ. FT. INDUSTRIAL UNITS



## 43214 Black Deer Loop, Temecula

### DETAILS

- 52,224 SF Multi-Tenant Complex
- Suites from 1,344—19,200 SF
- Office/Warehouse Combinations
- GL Loading Doors
- LI Zoning (Verify)
- NO CAM FEES (Water/Trash Included)
- Easy Access to 15 Freeway



# 43214 Black Deer Loop, Temecula

