

±11,598 SF FOR LEASE

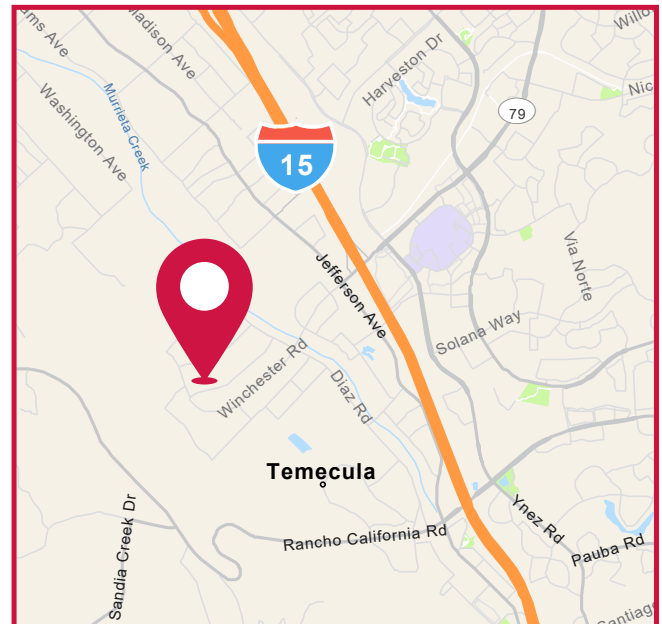
ZEVO INDUSTRIAL CENTER

42215 ZEVO DRIVE, BUILDING 3 | TEMECULA, CA



PROPERTY HIGHLIGHTS:

- ±11,598 SF Freestanding Industrial Building
- 10% office Buildout including reception, 2 offices, 3 restrooms, conference room and lunch room
- 24' Minimum Warehouse Clearance
- Fire Sprinklers
- Power: 800 Amps, 480/277 Volts, 3 Phase
- Ground Level Loading
- Located Within Westside Business Center
- Excellent I-15 Freeway Access



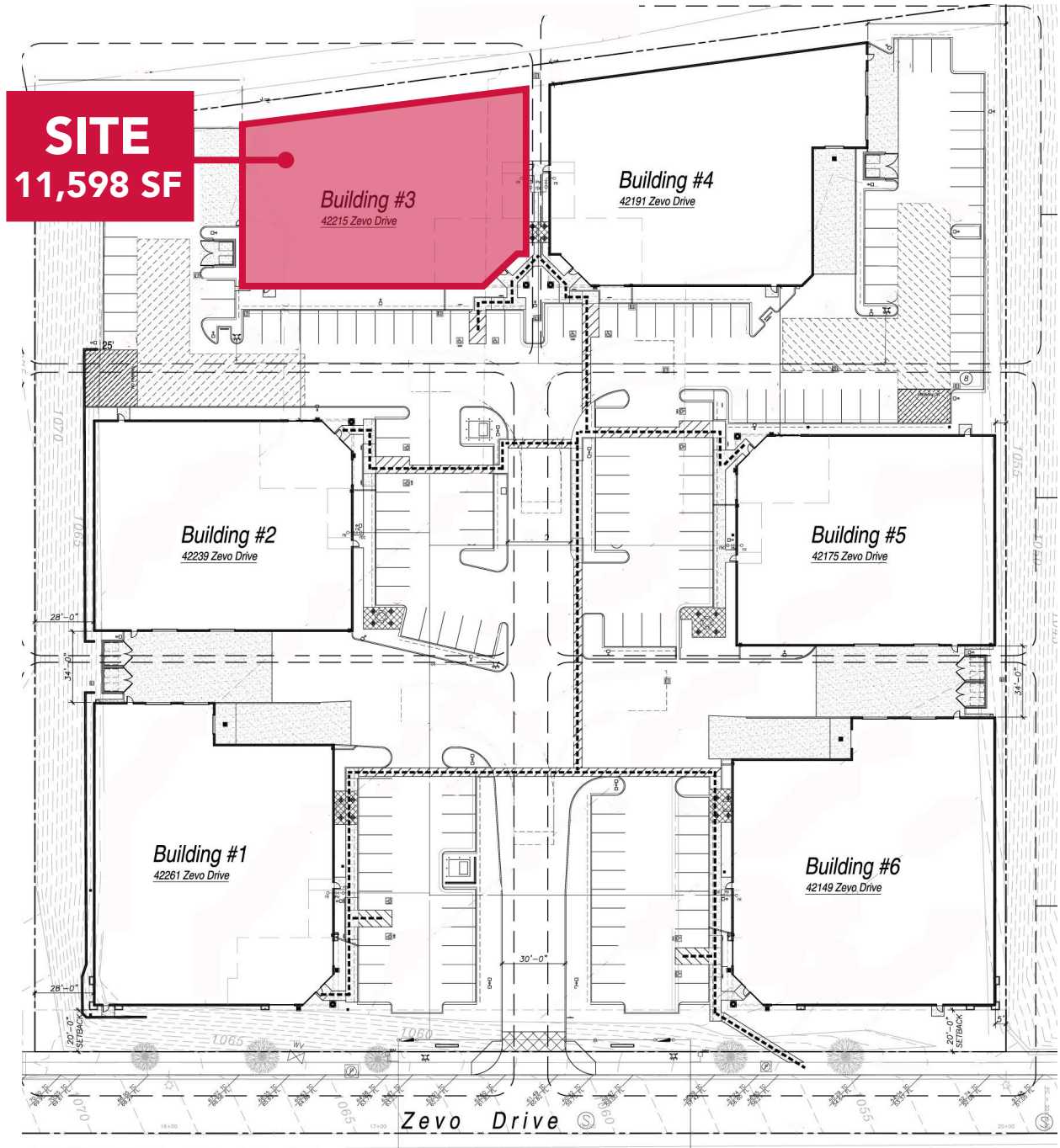
LEASE RATE:
\$1.19 PSF NNN

±11,598 SF FOR LEASE

ZEVO INDUSTRIAL CENTER

42215 ZEVO DRIVE, BUILDING 3 | TEMECULA, CA

SITE PLAN



±11,598 SF FOR LEASE

ZEVO INDUSTRIAL CENTER

42215 ZEVO DRIVE, BUILDING 3 | TEMECULA, CA

BUILDING 3 - 11,598 SF

